

T.A.O. NEWSLETTER

Quarterly Company Newsletter



IN THIS ISSUE

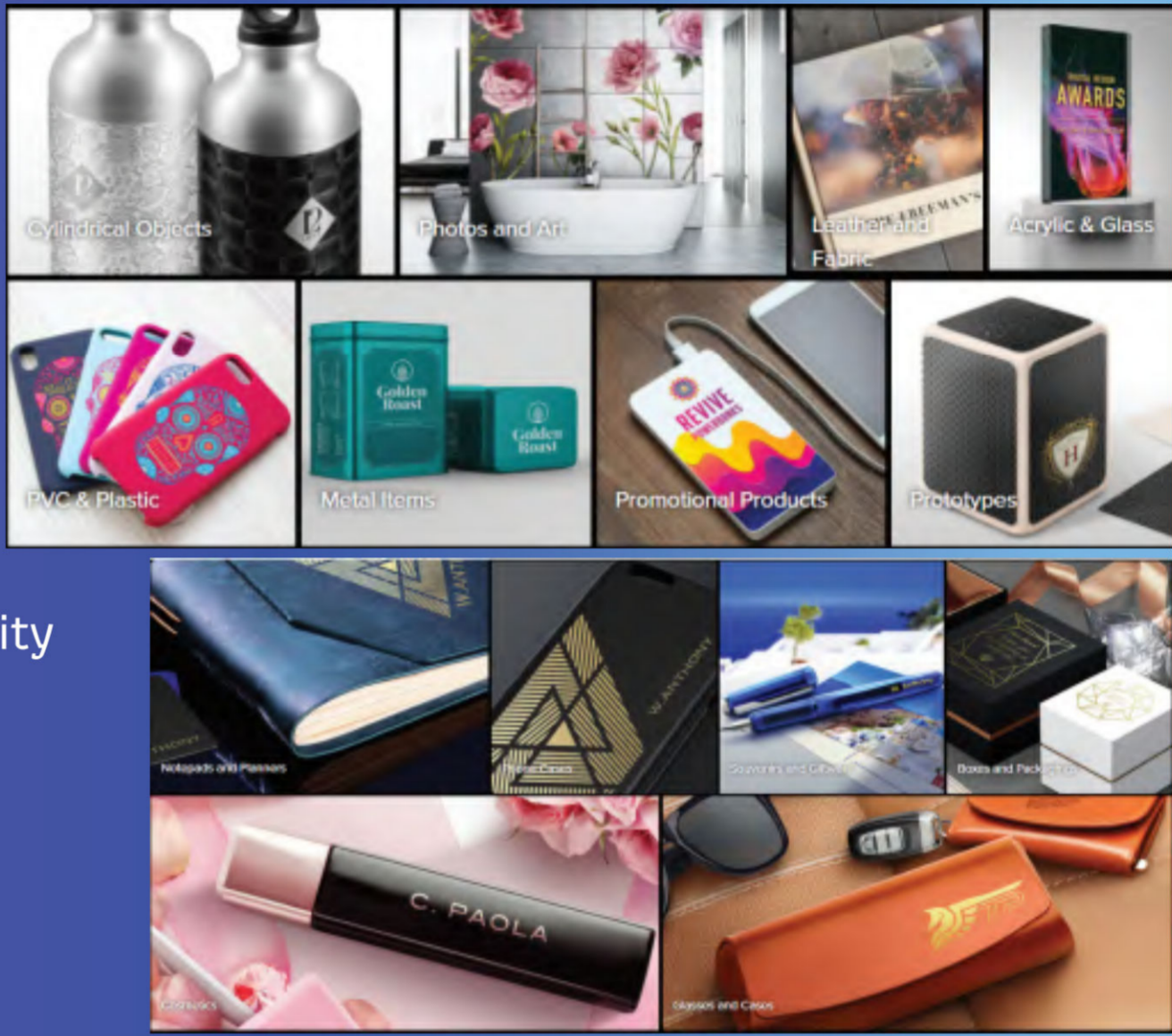
HIGHLIGHT: P.1 - P.2 Digital Printing for Industrial decoration

PRODUCT&SOLUTIONS: P.3 - P.5 Solutions of Digital Printing for Industrial

Highlight

Digital Printing for Industrial decoration

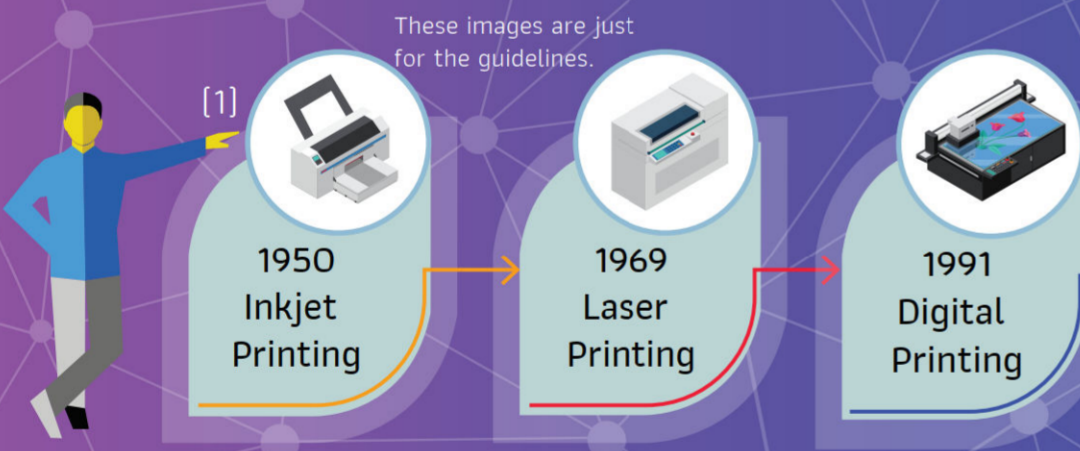
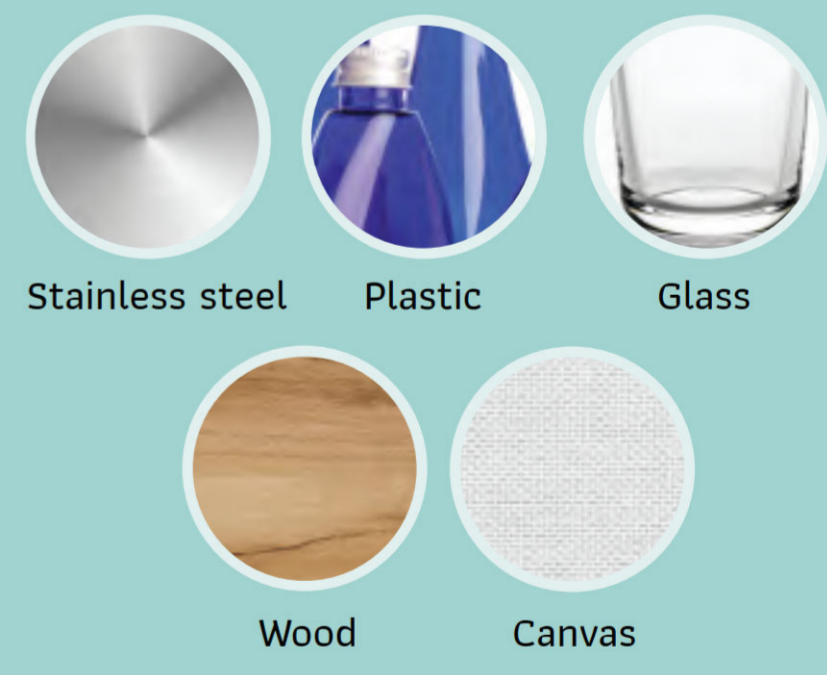
There are a wide variety of systems for Industrial printing; for example, inkjet printing, offset printing, pad printing, flexographic printing, etc. The appropriate type of printing system to use depends on many factors such as the type of substrate, quantity, timing, and so on. Other important factors to consider are the quality of the printed output, as well as production costs which meet the consumers' requirements.



Digital printing is a printing process where a digital image is printed from the computer directly on to a medium without the use of intermediate materials such as printing plates or the preparation of any pre-press processes. The type of printer to be used can be either a small or large inkjet or laser printer, depending on the type of substrate to be printed on. Due to the simplicity and ease of digital printing, it is becoming market demand at present.

Direct-to-Object printing (DTO) use UV and Solvent inkjet printing technology to decorate three-dimensional objects.

DTO can be applied to a limitless variety of products with multi-dimensional shapes or uneven surfaces.



The continuous development of Digital printing technology has enabled the addition of more advanced functions such as AI for inspection and automated processing. It has been developed for industrial applications, as well as for use with special inks and coatings. The common applications for industrial use include label printing, packaging, electronic equipment, appliances, toys, stationery, shoes, sports equipment, and etc.

Digital Printing serves the needs of all market levels from



It can be printed on demand, can print short runs, frequent runs as well as customization

Solutions of Digital Printing for Industrial

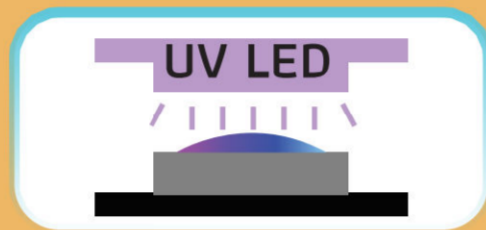
In this edition we would like to recommend the Direct-to-Object Industrial Digital Printing Solution. It enables direct print capabilities on a variety of substrates and three-dimensional [3D] objects. This creates new opportunities for industrial printing to produce multiple brilliant colors and design effects and add value through product decoration with a simple production process and faster output.

As a distributor of printers, inks and accessories of ROLAND from Japan, we recommend 2 models that support Direct-to-Object [DtO] printing, which are VersaUV LEF2-200 and SF-200, as well as the laser decorating printer, DGSHAPE LD-300.

Type

Product highlight

Print & Ink Technology



ECO UV Ink EUV2, EUV4

Print Areas:

508 mm [w] × 330 mm [d] x 100 mm [h]

Print Resolution:

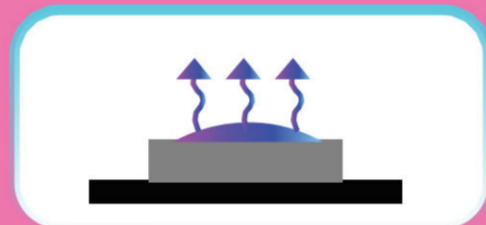
Maximum 1440 dpi

Benchtup UV Flatbed Printer with optimized ease and efficiency that supports printing resolution up to 1440 dpi. Create unique, desirable and highly profitable custom items on a variety of materials. For example, IT gadgets, promotional products, ceramics, prototypes, signs, plates, and etc.



VersaUV LEF2-200

Print & Ink Technology



Inku SF Solvent Ink - EN 71-3 Compliant

Print Areas:

508 mm [w] × 330 mm [d] x 100 mm [h]

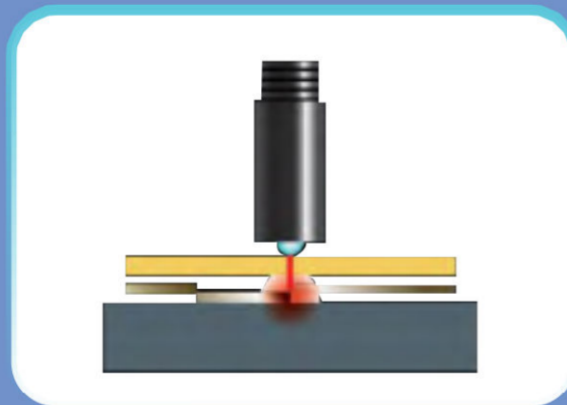
Print Resolution:

Maximum 1440 dpi

Flatbed eco-solvent printer for sensitive applications, such as active usage by kids and frequent skin contact such as toys, soothers, food containers, sport apparel, health and personal hygiene items [e.g. toothbrushes], glass frames, medical devices.



SF-200



Fast, easy-to-use, and safe-to-operate, the DGSHAPE LD-300 decorator is a hot foil printer machine that personalizes polycarbonate, acrylic, and leather items with super-stylish metallized foil logos, designs and text.

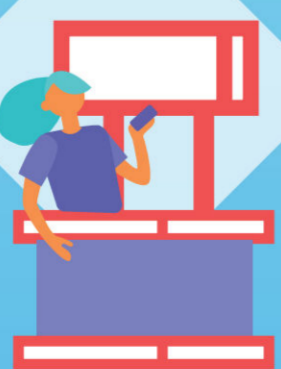
Market segment



LD-300



Retail Customers



Kiosk Shop



Distributors

Designers, Creative



Brand Managers



Manufacturers

VersaUV LEF2-200 Benchtop UV Flatbed Printer

With optimized ease and efficiency, you can print directly onto accessories, giftware, ceramics, and countless other popular products. Create unique, desirable, and highly profitable custom items with the VersaUV LEF2-200 flatbed UV printer that offers brilliant color results, realistic textures and stylish embossed effects. Included VersaWorks 6 RIP Software, which is the latest edition features powerful new 64-bit processing and RIP capabilities, plus the easy cropping, tiling, nesting, and other advantages of the world's most popular RIP software.

The compatible ink with LEF2-200 is CMYK, White and Gloss ECO UV[®] [EUV4] inks. Print gloss/matte finishes, realistic textures, or 3D embossed effects to add an irresistible new dimension of "touch and color". Optional Primer increases efficiency by prepping the surface of material like acrylic and plastic for full-color customization.

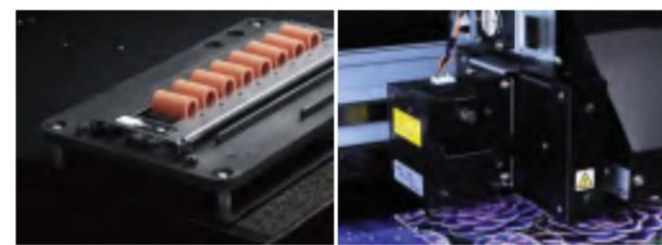
Unlike other inkjet printers, ECO-UV ink is cured instantly on the surface of the material, allowing you to print directly onto hard and soft materials such as PVC and plastics, canvas, wood, leather and fabric.



Outstanding Features of LEF2-200



With state-of-the-art UV ink system, the fully enclosed LEF2-200 flatbed UV printer is simple-to-operate and runs clean and cool with a safeguarded operation.



Maintenance systems help to remove any ink remaining on the print heads and cleans the print head surface to maintain the health and print efficiency of your printer.

If a nozzle on the print head is clogged and misfiring, you can minimize printer downtime with the ability to turn off a specific nozzle band to allow continued production.



Easy-positioning fixtures for simple product placement. For efficient job set-up and operation, the machine menu includes media height display, customized origin point settings and custom preset naming.

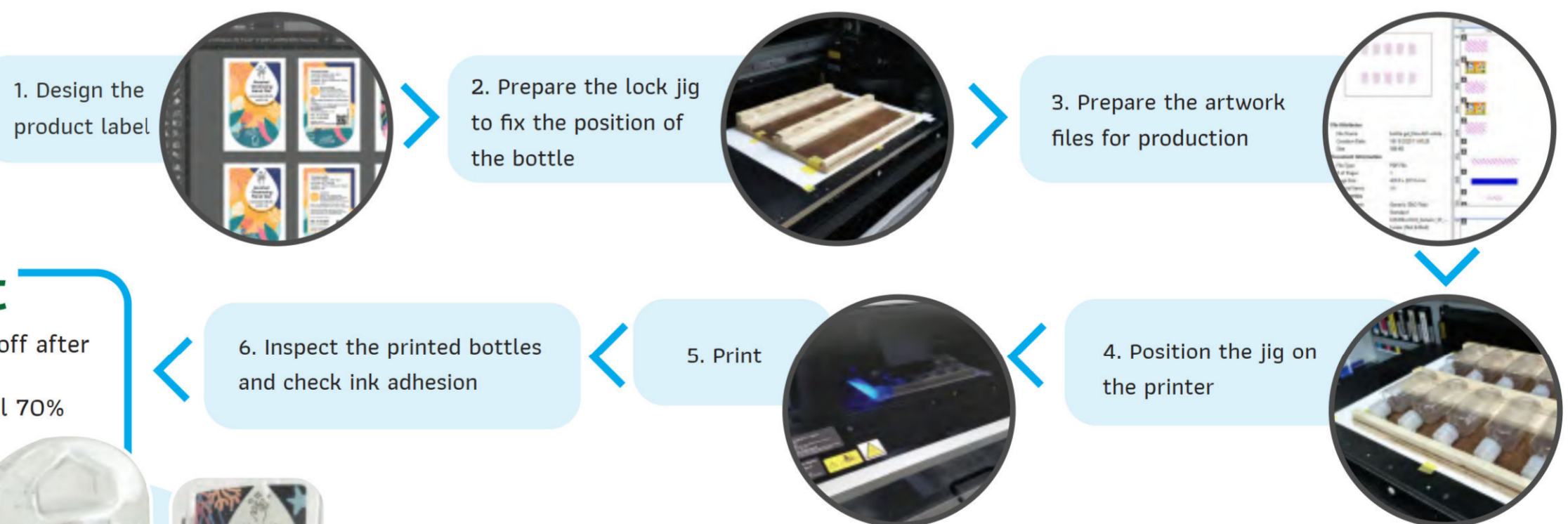


Automatic systems complete the setup operation so you can begin printing immediately after loading items.

Distinguishing Features

- ✓ Optimized for the VersaUV curing system for perfect curing system for perfect curing at all print speeds.
- ✓ Flexible Hybrid UV ink, enabling adhesion to many surface types and shapes.
- ✓ Free from Volatile Organic Compounds or VOC, so it is safe when the ink is completely cured.
- ✓ Superior scratch and alcohol resistance.
- ✓ Compatibility with both coated and uncoated media.

Case Study: Marketing team in collaboration with Product Testing Division, T.A.O. Bangkok Corporation, printed front and back of alcohol gel bottle, tapered shape, size 4.5cm [w] x 11.5cm [h] with VersaUV LEF2-200 Benchtop UV Flatbed Printer. Steps:



Testing Result

- ✓ Pass Adhesion test - No ink peeled off after cross-cutting
- Pass chemical resistance tested with Alcohol 70%



You can get an attractive printed job as designed, such as angles, curves, color shades, text sharpness, emboss and glossy. In one printing process, you will get a high value and outstanding product that can create brand awareness.



To ensure the printed work comes out complete, beautiful and durable



Step 1: Print white color as the first layer to enhance the vibrancy of the colors of the design



Step 2: Print according to the design



Step 3: Print the gloss varnish to enhance the vividness of the colors and ensure scratch resistance

*** If you are interested in a print demonstration or would like to request printed samples of alcohol gel bottles, please feel free to contact our Customer Service or request at info@taobangkok.co.th.

SF-200 Flatbed eco-solvent printer for sensitive applications

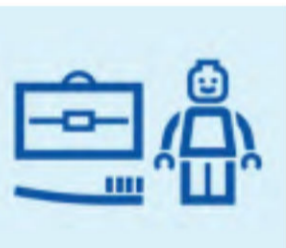
The SF-200 is ideal for printing sensitive applications, such as active usage by kids and/or frequent skin contact such as toys, soothers, food containers [lunch-boxes, drinking bottles, etc.], sports apparel, health and personal hygiene items [e.g. toothbrushes], glasses frames, medical devices, promotional items, cosmetic containers, electronics on specific materials – ABS, PVC, TPU, PET, PP, PMMA, wood to name a few. Maximum printing resolution is 1440dpi.

The SF-200 includes Roland’s user-friendly VersaWorks 6 RIP software, developed to make your printing operation quick and easy. VersaWorks 6 RIP software has an interface with simple operation and management, and native 64-bit and dual core operation for PDF file processing, EPS, PS and PDF 2.0 with precision and speed.

Inku SF inks, which are used in SF-200, are tested for meeting the requirements of EN 71-3 standard [toys safety].



Key Benefits of SF-200



Print precise, vivid, full-color images on a range of clear and colored objects and media.



The SF-200 includes Roland’s user-friendly VersaWorks 6 RIP software, developed to make your printing operation quick and easy.



The SF-200’s highly durable INKU SF inks are tested to meet the requirements of EN 71-3 standard.



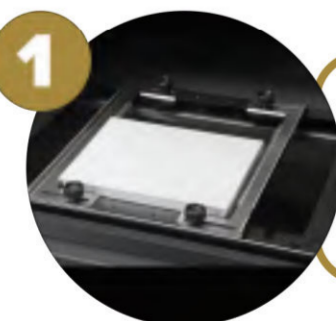
An optional base unit is available, featuring spacious heated drawers for pre- and post-treatment if required, enabling use in retail and office environments.



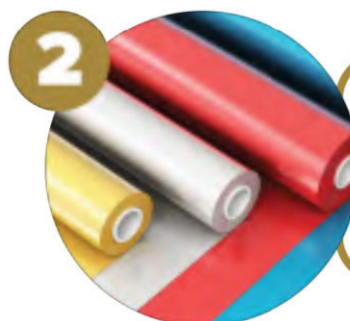
LD-300 Laser Decorator

The Roland LD-300 laser decorator is a hot foil printing and laser marking machine that personalizes and decorates polycarbonate, acrylic, stationery, leather and other items with laser engraved or metallized foil logos, designs and text. You can add product value in minutes using a myriad of reflective graphics in a range of textures and colours. Bundled with software and jig workflow, it can provide a unique opportunity for your design or production teams, kiosk, online storefront, or graphics business to create original and exciting custom products.

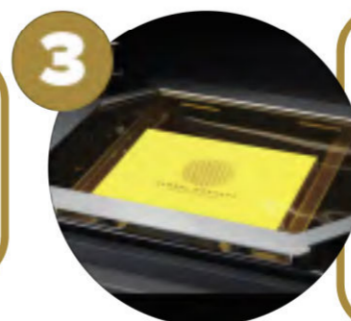
Create Unique Custom Products in 4 Easy Steps



1 Place your objects in the machine



2 Add your chosen foil



3 Laser imprint your design using the included software



4 Your customized products are ready to sell.

Besides the models mentioned above, we have other models of digital printer that support a wide variety of printing jobs apart from DTO [Direct-to-Object printing]. We are pleased to provide consultation and more product information for your printing jobs. Please feel free to contact our customer service or send inquiries to us at info@taobangkok.co.th.

Credit photo : Designed by Freepik



T.A.O. Bangkok Corporation Ltd.
Your trusted partner.

Headquarter: Bangkok, Thailand
Vietnam: Hanoi, Vietnam
Ho Chi Minh City, Vietnam



Please advise us your interested topics or any comments to:



info@taobangkok.co.th



www.taobangkok.co.th